

NEW EDINBURGH COMMUNITY FORUM



NEW EDINBURGH COMMUNITY FORUM 2014

**"As We Heard It" Report
to Forum Task Force**

Submitted by: Catherine Lindquist

Submitted to: Forum Task Force

Forum Photos: John Arnold

Table of Contents

1. Framing the Forum	pg. 1.
2. Promoting the Forum	pg. 2.
3. The Forum at a Glance	pg. 3
4. The Forum – Open House	pg. 3.
With View Point Panels on:	
- Positively New Edinburgh	pg. 6.
- New Edinburgh Challenges	pg. 7.
- Vision For New Edinburgh	pg. 8.
5. The Forum – Facilitated Session	pg. 9
With Discussion Table Reports on:	
- Traffic and Parking;	pg. 12
- Green space and Waterways;	pg. 13.
- Heritage and Development;	pg. 14.
- Community Engagement;	pg. 15.
- Beechwood Corridor	pg. 16.
6. Attachments	pg. 21

1. Framing the Forum:

Forum Co-Hosts:

New Edinburgh Community Alliance (NECA)
New Edinburgh Community & Arts Center (NECTAR)
Crichton Community Council (3 Cs)

Forum Task Force:

Leader: Paula Thompson, vice-president of NECA
Tim Plumptre, president of NECA
Catherine Lindquist, co-chair of NECA Communications & Membership Committee
Judy Reid, member, NECA Communications & Membership Committee
Sean Flynn, chair of NECTAR board
Debra Conner, 3 Cs
Catherine McConkey, 3 Cs

Forum Supporters:

NECA, NECTAR, 3 C's
City of Ottawa Staff
John Arnold, photographer
Bridgehead

Forum Goals and Background:

The idea for holding a community forum on the future of New Edinburgh was first brought to the NECA Board in 2013 by Board member Tim Plumptre, further to a suggestion made to him by local youth.

The NECA Board was supportive of the idea and at the NECA AGM in October 2013, members were asked if they would be interested in taking part in a Forum to discuss the future of the community. There was a very positive response to this idea.

The newly appointed NECA Board was enthusiastic about holding the Forum and felt it should be a joint initiative of the three community organizations - NECA, NECTAR and 3 Cs. Paula Thompson agreed to take the lead in contacting NECTAR and the 3 Cs and to seek their support and participation in a joint Task Force.

NECTAR and the 3 Cs also heartily supported the joint initiative and **task force** which first met January 19, 2014 at New Edinburgh House. The task force held numerous meetings to frame the Forum goals and process and plan its promotion.

The Forum goals were identified as being to:

- Hear about our community's priorities and vision for New Edinburgh's development;
- Better engage the community in helping to make it happen; and
- Inform candidates for Councillor, Rideau-Rockcliffe Ward 2014-18 of the community's views.

A **pre-forum survey** of a number of community residents was undertaken by task force members to affirm and gauge residents' interest in, key concerns to address and availability for a proposed Forum date (Attachment 1.). Based on the feedback received, preliminary discussion topics and a date were confirmed for the Forum. The New Edinburgh Community Forum was held Sunday, April 27th from 2:00-5:00 pm at Memorial Hall.

2. Promoting the Forum:

- | | |
|--------------------------|---|
| New Edinburgh News | - Forum Ad created by Catherine Lindquist, inserted on front page; |
| | - Content in NECA/Tim Plumptre and NECTAR/Sean Flynn columns |
| NECA and NECTAR websites | - Ads and notices posted |
| NECA Member Email list | - Notices sent by Catherine Lindquist |
| New Ed List Serv | - Blasts sent by Paula Thompson |
| New Ed Mom's List Serv | - Blasts sent by Paula Thompson |
| NECA Facebook | - New NECA Facebook Page and special event created and refreshed by Judy Reid |
| NECA Twitter | - Tweets (re)tweets sent by Paula Thompson and Judy Reid |
| Posters | - Printed by Sean at NECTAR and posted by Task force, eg. at businesses, on poles |
| Postcards | - Hand delivered by Task Force members |



NEW EDINBURGH COMMUNITY FORUM



SUNDAY APRIL 27TH, 2 - 5 PM
MEMORIAL HALL, 39 DUFFERIN RD.
(AT MACKAY ST. / MACKAY UNITED CHURCH)


Refreshments, including Bridgehead beverages, served.

*Come and share YOUR VIEWS
for New Edinburgh's Future !*

All Welcome and RSVPs appreciated:
www.newedinburgh.ca

Co-hosted by:

New Edinburgh Community Alliance (NECA),
 New Edinburgh Community and Arts Centre (NECTAR),
 and Crichton Community Council (3 C's)

 FOLLOW US! @New_Edinburgh

3. The Forum at a Glance:

Held: Sunday, April 27, 2014 from 2-5 pm at Memorial Hall

Co-Hosted by: New Edinburgh Community Alliance (NECA),
New Edinburgh Community & Arts Center (NECTAR), and
Crichton Community Council (3 C's)

Attended by: ~75 New Edinburgh residents (59 signed in)
Ward Councillor Peter Clark and 6 candidates for Ward Councillor in 2014 election:
Jerome Nicholas, Cam Holstrom, Marc Belisle, Tobi Nussbaum, Penny Thompson, Sheila Perry.

4. The Forum - Open House:

Arrival:

Forum attendees were welcomed at the door and asked to sign in and then to proceed to 'View Point' areas featuring:

- a **photo gallery** displaying photos of New Edinburgh taken by **John Arnold**
- a panel with a large aerial map where participants marked their place of residence with yellow dots, and panels with general land use and zoning maps provided by the **City of Ottawa**, and
- **view point panels** on which participants were asked to place comments using post-it notes and markers:
 - POSITIVELY NEW EDINBURGH / I ♥ New Edinburgh because...
 - NEW EDINBURGH CHALLENGES / New Edinburgh would be better if...
 - VISION FOR NEW EDINBURGH / In the future, New Edinburgh should be...

They were also encouraged to visit **information tables** set up by the three community organizations, to help themselves to refreshments and then take seats at discussion tables with a topic of interest.



Forum Open House

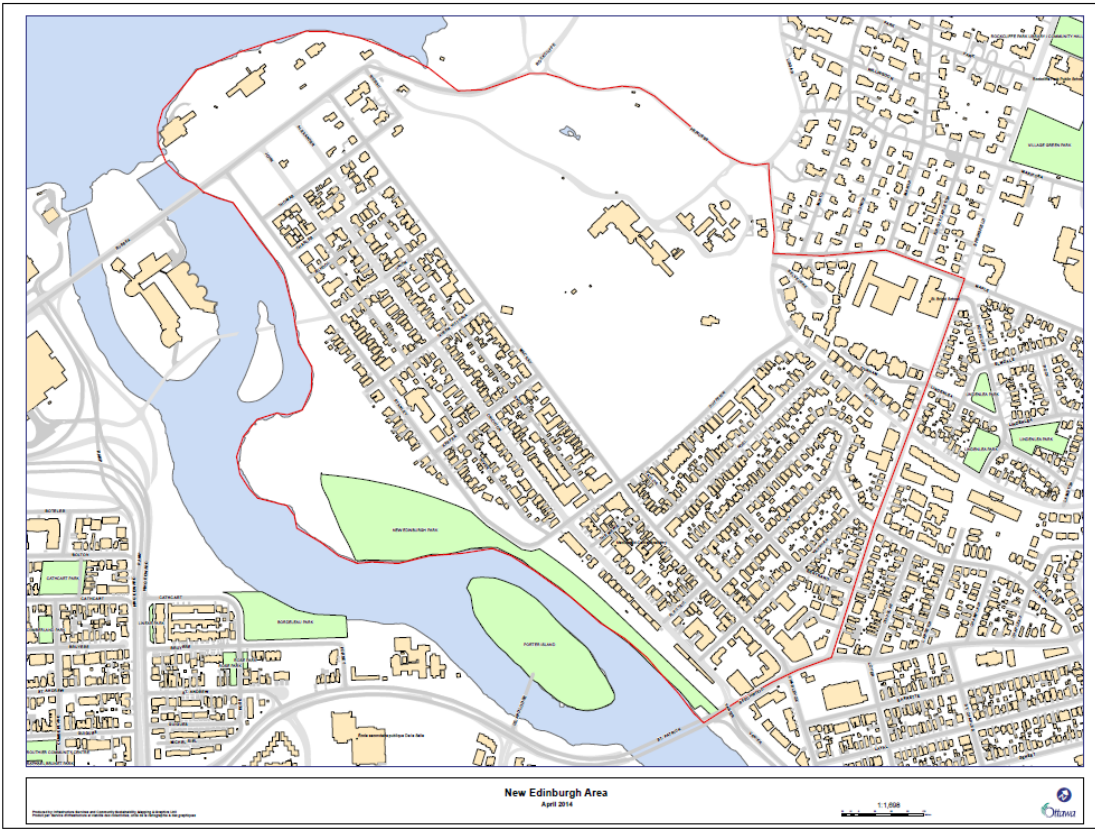
Map Panels:



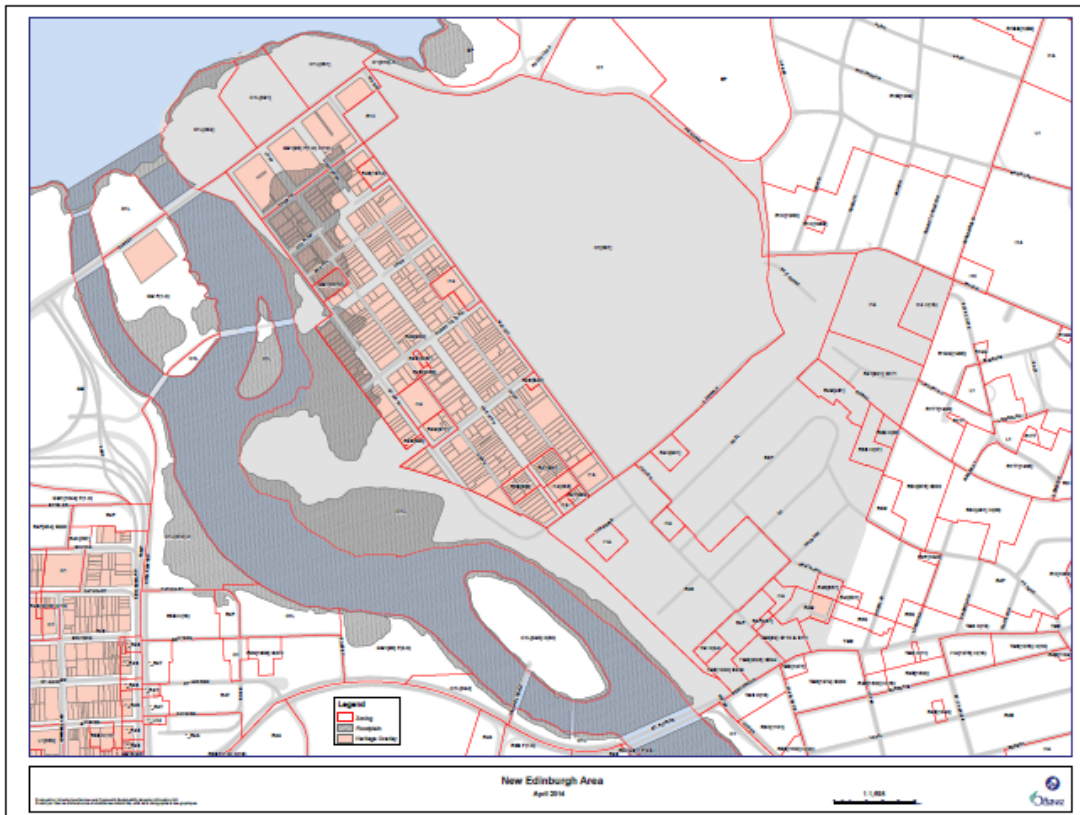
Aerial Map



Aerial Map Panel with Participants' Residences Marked



Land Use Map



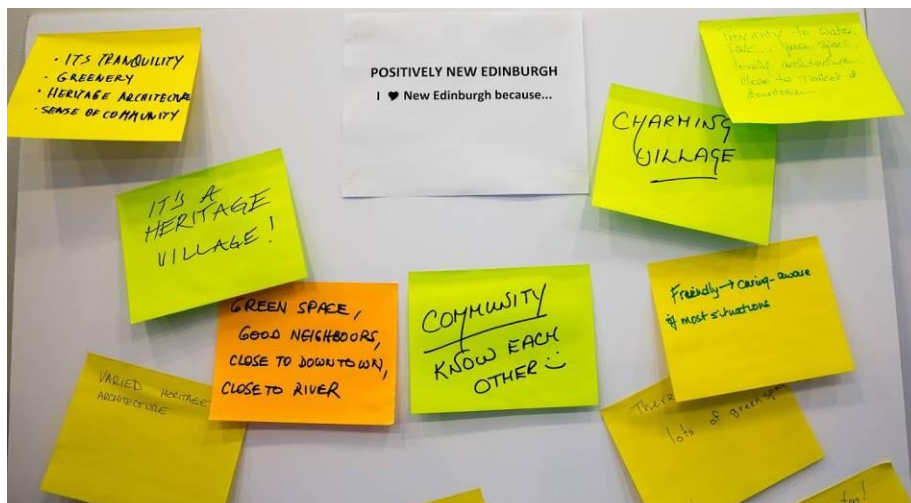
Zoning Map

View Point Panels:


Note: as much as possible, Panel notes are as written, e.g. children's writing unchanged

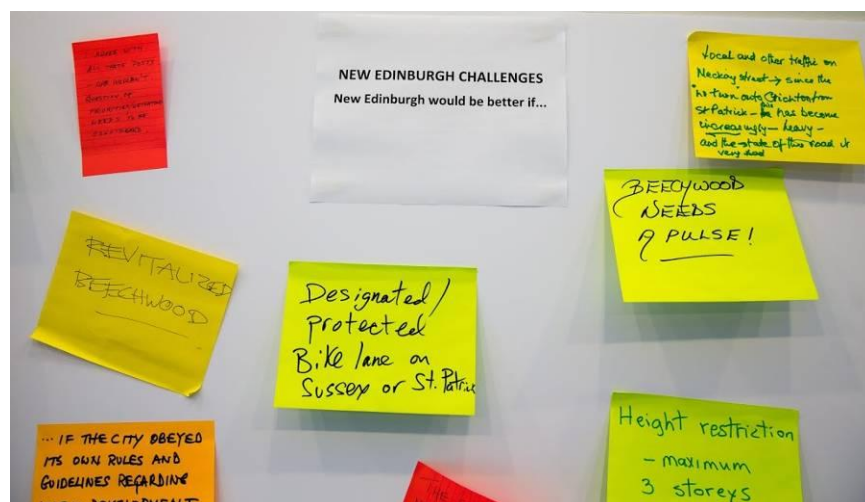
Panel 1: POSITIVELY NEW EDINBURGH: I love New Edinburgh because:

- IT'S A HERITAGE VILLAGE!
- CHARMING VILLAGE
- URBAN VILLAGE
- · ITS TRANQUILLITY · GREENERY · HERITAGE ARCHITECTURE · SENSE OF COMMUNITY
- Books on Beach-wood
- proximity to parks green space, lovely architecture, close to downtown
- It is a heritage village, green space, good neighbours, close to downtown, close to River
- Human scale
- My children are growing up in community where they know and interact with their neighbours
- PEOPLE KNOW AND GREET EACH OTHER, LIKE IN A Village
- there is an awesome Stanly Park
- COMMUNITY KNOW EACH OTHER :)
- · Parks · Location · Bike Path
- VARIED HERITAGE ARCHITECTURE
- STANLEY PARK RIVER PROXIMITY BEAUTIFUL
- Gens de tous les âges petits et grands
- Sense of Community Architecture Laneways
- HUMAN SCALE
- Parks & Historic charm
- You can walk from Beechwood to Sussex and be invited into half a dozen or more neighbour houses for a visit along the way.
- There is lots of green space
- Friendly -> caring - aware of most situations
- Proximity to water, park, green space, lovely architecture, close to Market and downtown
- Zoya lives there too!
- GREEN SPACE, GOOD NEIGHBOURS, CLOSE TO DOWNTOWN, CLOSE TO RIVER
- · Its Tranquility · Greenery · Heritage Architecture · Sense of Community
- Books on Beechwood



Panel 2: NEW EDINBURGH CHALLENGES. NE would be better if:

- REVITALIZED BEECHWOOD
- Ice Cream Shop 
- BEECHWOOD NEEDS A PULSE!
- More green land \ Parks
- inclusive programming & services for all: language, age, income, ability
- have more soccer fields !!!!!!!
- more book stores !!!!!!!!!!!!!!!
- PARKING ON SIDEWALKS BY CARS + TRUCKS VAUGHAN ST.
- THE CITY + DEVELOPERS WOULD BETTER RESPECT OUR HERITAGE STATUS
- ENTRANCE TO NEIGHBOURHOOD: VANIER PARKWAY/BEECHWOOD TOTALLY UNFRIENDLY TO CYCLIST-PEDESTRIAN
UGLY - 3rd RATE DANGEROUS
- IMPROVED SHOPPING DISTRICT
- equitable city funding for new edinburgh community services
- ACCESS TO BEECHWOOD METRO DIFFICULT/UNPLEASANT/DANGEROUS FOR PEDESTRIANS
- STREETS TOO WIDE - SPEEDING/WRECKLESS DRIVING
- ALL INTERSECTIONS BEECHWOOD/SPRINGFIELD MACKAY UNMARKED /NO MARKINGS NOT DONE FOR PEOPLE WHO WALK
- ...IF THE CITY OBEYED ITS OWN RULES AND GUIDELINES REGARDING INFILL DEVELOPMENT
- too many residents not involved - some landlords - lack of vision for the neighbourhood as a whole
- Designated/protected Bike lane on Sussex or St. Patrick
- THE SCALE OF NEW DEVELOPMENT WERE RESPECTED
- Height restriction - maximum 3 storeys (Rome, Paris etc) no highrises
- More Parks!!!
- there was street calming on Crichton St.
- Have the city install a dog waste flushing station in the off-leash dog park.
- Local and other traffic on Mackay street -> since the "no turn" onto Crichton from St. Patrick - this has become increasingly - ugly -heavy-and the state of the road is very bad
- Continued & strengthened collaboration between NECA NECTAR & CCC
- I AGREE WITH ALL THESE POSTS - WHO WOULDN'T QUESTION OF PRIORITIES/WEIGHTING NEEDS TO BE CONSIDERED
- More books for Books on Beechwood



Panel 3: FUTURE - Vision for New Edinburgh:

- NECTAR fully funded & publicly owned.
- Best place in the world
- No New Buildings!
- be a neighborhood with lots of heritage buildings
- VIBRANT LOCAL / INDIE SHOPS ON BEECHWOOD.
- NEED TO WORK AT MAKING BEECHWOOD SHOPPING AREA INTERESTING, VARIED AND RESPONSIVE TO LOCAL NEEDS
- (More) Some shops in residential areas
- CONTINUE TO BE THE GEM IT IS !
- BE PROTECTED AGAINST FLOODING & NCC EMBASSY DEVELOPMENT ON PRECIOUS GREEN SPACE.
- BE ADMIRER + LIKED BY OTTAWANS
- FOCUS ON GOOD DESIGN RATHER THAN INFILL VS PRESERVATION
- BE A MODEL NEIGHBOURHOOD FOR OTTAWA ... IF NOT MORE
- N.E. will have the best designed, most vibrant main streets in Ottawa
- have no condos
- have more soccer fields!!!!!!
- A Haunted house for Halloween



5. The Forum - Facilitated Session:

Welcome / Comments:

Catherine Lindquist served as **Facilitator** and introduced the session.

She then invited representatives of each of the three host organizations to briefly explain their mandates and activities.

*The following Forum Notes are based on summary notes taken by **Sarah Anson-Cartwright**, and tapes made and transcribed by **Catherine Lindquist**.*

Tim Plumptre, president of NECA, explained how the association “jousts with City Council - they win, we lose” with respect to heritage and development issues. He mentioned that NECA also collaborates with the other groups in the neighbourhood.

Sean Flynn, chair of NECTAR, explained that his organization used to be called the 4Cs, but three years ago, they moved from 200 Crichton Street to the Manse, also known as New Edinburgh House, and became NECTAR. He said it is a community hub for New Edinburgh and beyond, offering programming for kids, adults, seniors, everyone.

Debra Conner, of the Crichton Community Council, also known as the 3Cs, explained its role as landlord for the field house, the instigator for the splash pad in the park, and the host of various family community activities throughout the year. Among the events are: New Year’s Day, Hockey Day in New Edinburgh, the Ottawa Race Weekend cheering station, a July picnic, and in the fall, a Halloween event. The 3Cs’ fundraisers include a plant sale in May, the New Edinburgh garage sale in the Fall and by renting out the field house.



Tim Plumptre / NECA



Sean Flynn / NECTAR



Debra Conner / 3 Cs



Forum Leader Paula Thompson Welcomes All

On behalf of the task force which organized the event, **Paula Thompson** thanked **Ward Councillor Peter Clark** for attending and **John Arnold** for the photographs on display in the Hall, among others. She then recognized those in attendance who are candidates running in the election this fall: **Jerome Nicholas, Cam Holstrom, Marc Belisle, Tobi Nussbaum, Penny Thompson and Sheila Perry.**

She explained the purpose of the session is to hear “what are your concerns”, how we can increase community engagement, and finally, since the Councillor and candidates are in the room, we want to inform them of the neighbourhood’s concerns in an election year.

Catherine then invited Councillor Clark to speak.

Peter Clark said that the Heritage Conservation District update will be completed this fall to bring it up to date with provincial heritage legislation. “This will be an opportunity to beef it up,” he said. He noted that the neighbourhood has had some unbeatable battles. It is the same problem in Lindenlea and Overbrook and not as bad as it is in Westboro, in his view. He said this is what the neighbourhood should think about, to make sure we have strong enough tools to preserve heritage. That will be a challenge for whoever wants the job of councillor, himself included, he said.

He will be as of next month funding a “road diet” for St. Laurent Boulevard between Montreal Road and Beechwood. "That's essentially saying is there any way we can change that from four lanes to two lanes with turning lanes and cycle lanes and so on. Not 'Complete Streets' because it's not the same thing....that road is already inadequate and through the Manor Park community association and Cardinal Glen community association we are commencing the process - but believe me it could take a long time - but I believe if you have the right objective you'll get to where you want to get to - and I think you might want to consider what can we do with Beechwood. I know I want to do something with that the last block over here - it's is like jammed up for people who want to go straight through and just can't get in." He said he's been awaiting Cindy [Parkanyi's] editorial on this.

Councillor Clark then noted NECTAR has gone through a trying time with a lender that was often as a mortgage broker more interested in selling mortgages as opposed to doing what was right for NECTAR. "We have resolved that issue and NECTAR is ready to move forward," he said.

The councillor then said, "We talk about community strength and engagement... this community is really engaged - you're engaged now - look at you." From his point of view, the modifications to the Minto site as a result of the forum held in New Edinburgh in January 2013, have been very successful, he said. Two condos at each end of the 'Beechwood drag' have had sufficient sales to start construction and are coming along, he said.

"I have one other thing that's close to my heart - it's a little place called **Heartwood House**: it's not actually in New Edinburgh, but it fits. It fits because 18 small charities under one roof that share the cost and share the pain [they had the same lender - it was another complication]. It's my view we need to be supportive of these two agents, NECTAR and Heartwood, because they are, at the bottom of it, the type of community organizations we want to live with, deal with," he said.

Councillor Clark concluded his remarks: "Finally, the purpose of today's forum is the collection of ideas and I know from previous exposure that there'll be a lot of ideas and it may not all make sense - that doesn't matter: pop some up there, throw 'em up against the wall and see what sticks, and have a good afternoon."

Catherine thanked Councillor Clark and noted thanks were also due to **City staff** including **George Paoletti** for preparing maps and **Eva Walrond** for supplying demographic info for the Forum.

She then explained the agenda for the afternoon. There are tables with five topics: Traffic and Parking; Community Engagement; Green space and Waterways; Heritage and Development; and the Beechwood Corridor (there were two tables for this topic due to interest). A 'Miscellany' table was also available if desired.

Each table had three questions – to outline community concerns on the topic; to recommend solutions or actions and who is responsible for resolving them; and to describe the future in ten years' time in New Edinburgh. Discussions at each table took place for the next 30 minutes. Then Catherine invited participants from each of the tables to report back their answers to the whole audience.



Discussion Table



Preparing Table Report - Noor Ahmed

Discussion Table Reports

Traffic and Parking

Note Taker: Roslyn Butler

Reporter: Anita Szlazak

- There are no rules for parking on MacKay - no signs to indicate where between Noel, MacKay, the entire area - people are parking right in our driveways trying to get into the 27 unit apartment building and churches
- There have been serious accidents when people leave and can't see - Too near to driveway - we need to ask the City for No Parking signs at entrances and stops
- The City also needs to trim tree branches which obscure the signs - can't safely see for turning movements
- Parking at the Clocktower at MacKay and Beechwood is too close to Beechwood stop and delivery trucks stop there all the time -the same thing at the Minto development - we discussed these issues 2 years ago/ad nauseum
- Who is going to do something about these things and do it now? - These are safety issues.
- Traffic running through on Dufferin by the Governor General's to Rideau Terrace - and Dufferin 'bulge outs' are creating accidents: parking should be on same side as bulge outs not opposite side -creates one lane only
- Parking on Crichton - people cannot get permits - On MacKay, cars park there day and night - but no enforcement - no signs
- Beechwood is now a highway - particular problems for blind, elderly, handicapped who need special things done for them
- Reduce the traffic speed in our area generally [applause] (how long will it take to get the City to do that?)
- Audible crossing zebras - especially on Beechwood for handicapped, elderly and school crossings - need formal ones for safety
- Need to bring the issues in a formal way to City traffic department or Council and involve the Councillor actively

Future:

- We want people to be able to walk safely to more destinations
- And elderly and infirm people need to be taken into consideration
- We need to build official city parking garage

Green space and Waterways

Note Taker: Cindy Parkanyi

Reporter: Bob Burchill

- the table had four principal issues:
- Concern for the **floodplain** - many people in this area are not too high above the river - the water levels have been rising increasingly higher as time goes by
- Some time ago there was an assessment made of the impact of waters on this area, but it's out of date and should be accompanied by a **modelling of the upstream impact**
- We're very fortunate that many of the fine citizens aspiring to be our representatives in the City are here and we know they're taking copious notes and will be committed to this (and if not, we'll find them!)
- We need to develop a community based **emergency response plan** for more than just flood warnings (eg, ice jams)
- It would be useful for us as a community to know how we could help others in distress
- Great concern for **green space particularly along Sussex Drive**
- Most is NCC land, and there appears to be neither any particular plan for it nor commitment to its preservation
- We need to take a more energetic interest in it
- It would be particularly useful for the community to develop a plan for both sides of Sussex Dr to at least concentrate the imagination of the NCC.
- Concern about the park and the use of it in the **off-leash dog areas**
- Very unclearly defined where that starts and ends - there is a lack of clean-up after people's dogs
- It's hard to know what practical steps can be taken by us - consider asking Friends of Park to pay some attention to that and they might come up with suggestions on their own
- Concerned about green space in sense of **residential landscaping and planting of trees**
- Might be useful to take an **inventory** now of all the ways to get trees for planting on your properties



Presenting Table Report - Bob Burchill

Heritage and Development

Note Taker: Paula Thompson

Reporter: Paula Thompson

- There was consensus at the table on the H&D issues (a little surprising). A few key words that came up:
- We really want to **strive for balance** - there's an acknowledgement that **infill will happen and that it's not necessarily a bad thing: we want to make sure that it's good infill; and that we value essentially the renewal of the community that's appropriate in scale and materials etc.**
- Peter Clark had mentioned a **renewal of the Heritage Conservation District plan** - which is seen as something positive that we should move forward on
- there was a project underway some time ago to **record the history of New Edinburgh** (a book?) which was paused
 - this would be useful for the community to have
- **character** was another word that came up - what we really want to do is preserve the character (people will like one style more than another) but it's the **character and feel of the neighbourhood that needs to be protected**
- believe the **infill guidelines** the City developed over the last few years are on the verge of becoming by-laws
- a lot of the issues raised at the table have been included in the recommendations for the guidelines
- so there's **support for infill guidelines and real desire to see them to become bylaws that are implemented/used**
- because they touch on key issues we talked about: scale, use of materials, setbacks, green space
- There was also a good conversation around the **desirability of having some commerce**, not just on Beechwood but within the community as well - 42 Crichton (which isn't a business right now) is something we think most people view quite positively, and that's a sign of a good, healthy community to have some things like New Edinburgh Spa, the new bridal shop at MacKay & Dufferin, bringing something back to 42 - something people can encourage - **a sign of a good, healthy community that has a good combination of residential and commercial.**
- There was a brief discussion on **derelict properties**: there's some are on Beechwood but there's some on Crichton: if they are going to be developed, then **develop them.**

Specific Recommendations:

- **Forums** like this and the one we had on the Minto development **are viewed very positively** - a good opportunity for people to collectively come together and discuss these issues and help get where we want to go, so **support for doing something like this more regularly**
- Is there an **architectural review board/forum in Ottawa - a support system to help NECA/other neighbourhoods preserve the character of their communities?**
- Where there is going to be infill and developers in our communities, we need **better relations with developers and the City. We need the community to be involved/informed at a very very early stage in the proposal of projects**

Future Vision:

In terms of vision, we want improved relations with the City and developers.

Ten years from now, it would be great if the City implemented its bylaws/guidelines on heritage and infill [applause] We want to see balance of restoration and infill; the character of New Edinburgh preserved and that's paramount; a lively urban village; a strong community with mix of residential and commercial.

Community Engagement:

Note Taker: Tim Plumptre

Reporter: Noor Ahmed

We started off asking **"What is community?"** And these words came up: it includes all; a safe place; family-oriented place; an extended family; a sum of all intentions of the people who live in the neighbourhood; a place where there are similar faces; of collaboration and care - in that what affects one neighbour affects the whole neighbourhood - a good example of that is Mr. Plumptre's house - as a community we all walk by that place and feel for the place and the people who live there - as something that has impact on the community.

- one of the most poignant statements came from a 4 year old who had just moved in with her parents to the neighbourhood, and after a block party on Ivy said to her Mother **"We can never live anywhere else Mom."**

Priorities that came from that discussion on how to engage community:

- One of the biggest things that came up - it's about **inclusivity**, meaning all types of people, from all walks of life and socio-economic status, and all different stages of life.
- We have in our neighbourhood people with very young families, who are young and don't have families, who have their kids out of the nest and 3 senior homes right in our neighbourhood - a very varied group of people.
- How do we engage all those different groups? One suggestion is we go to them. For example, **why wouldn't we have meetings like this in a seniors' home; an afternoon for youth in the field house; and a youth committee?**
- The other idea is *how do you engage more people?* It seems there's **very few people doing a lot of the work for most of the activities in the community.**
- We suggested that they take it upon themselves to gain one or two people to join - be friendly about it in that we're not expecting the typical obligation: it should be something that's fun, matches the interests of the person, shouldn't restrict their schedule, be flexible, **so volunteers feel they can provide something they feel like doing.**

Future Vision:

Firstly, we have three organizations - NECA, NECTAR, 3 Cs - there was some discussion about perhaps we could **amalgamate the groups or creating an umbrella organization so there's a sense of cohesion or coherency between the groups as opposed to a sense of competition.** An umbrella organization would be a way of dealing with it. Secondly, we talked about a **consistency of funding.** Perhaps these organizations are competing for funding. Again, if we have an umbrella organization we could have a stronger community engagement. And lastly, in 10 years or from today and forward we'd like to see more kids playing outside, more families outside engaging with each other.

From the floor, Sarah Anson-Cartwright stated the three organizations aren't competing with each other for funding and as heard at the outset, have three separate mandates. But we're all in the community and probably all need to do a better job of making sure our mandates are understood. But we're very much in touch with each other - this is an example of the three organizations coming together and saying let's host this forum together and let's make sure we inform our neighbours about what we're doing. But if there are funds we'd love to know about them!

Catherine Lindquist noted this was a point that came up in the pre-forum surveys though, the table was not the first to bring up that there might be some confusion in what we do, and hopefully today we're getting some more clarity.

Beechwood Corridor – Table 1:

Note Taker: Barbara Laskin

Reporter: Barbara Laskin

- the table's concerns were summarized with four words: **safety, aesthetics, shopping and community**
- **safety issue:** almost everybody around the table had something to say about **how dangerous it is for cyclists and pedestrians** - one person said her daily trajectory is dangerous, unpleasant, ugly -she goes out of her way to avoid Beechwood, even to shop elsewhere
- even our local grocery store is unfriendly to cyclists and provisions for putting bikes there are ugly and dead
- this was a theme taken up by many people: it's dangerous, a lot of people in our community bike and **we need a designated bike lane and we need to get cars off the street**
- the **entrance** to the neighbourhood has to be worked on, as does the **whole streetscape**
- **aesthetics was a big concern** - ugly lighting, derelict buildings, vacant lots and parking everywhere
- there was some discussion that whatever we do to revitalize Beechwood, we should involve artists, architects and planners so we have a thoughtful integrated plan where existing buildings are thoughtfully integrated with new revitalized spaces
- there are some **intractable problems we face: landlords are holding us hostage** and not addressing the dereliction, ugliness we face and lack of opportunity for businesses to move in: why is this continuing, why do we have so many discussions like this and yet the situation persists?
- Tobi Nussbaum at the table mentioned the Beechwood Village Alliance (BVA) is trying to work with business owners and reminded us there's a Community Design Plan in place since 2005 and we're now 2014...
- what happened? It's apparently a wonderful plan and many of you were probably involved in developing it but we don't know where it stands and the community as a whole is unaware of its provisions
- on the issue of **shopping**, it was unanimous around the table no big box stores please - small businesses, friendly in the community, a hardware store, a wine/liquor store (we all like to have a little tippie!) ...
- **a lot of diversity** - we used to have a little bit and now don't have it at all
- **we need life on the street, to improve the look of the street and safety**
- this is New Edinburgh and the Beechwood corridor also serves Rockcliffe and Vanier
- **we need to have our own identity:** we don't want to be the Glebe or Westboro - we want to be ourselves, so whatever we do let's adopt a look, character and a feel integral to our community

Specific Suggestions:

- We need to: fix the street, provide entrances to the street, better more aesthetic properties like lighting, address derelict buildings, suggests to us as nothing is happening - **we need political action**
- we've had this CDP since 2005 but where is the action on it?
- we need concerted efforts by our City Councillor whoever is elected in the Fall and by NECA and the BVA
- we should probably have another forum focused on this issue
- get city/representatives to report on where it's at with CDP and to account to us why they haven't made any progress or what progress has been made, what are the obstacles, and how do we address them
- In Montreal, one of the ways they found to address similar issues is by going not city-wide with a big plan but block by block - so that we can confirm and proclaim our identity as a community and decide what we want here
- Once the streetscape is addressed, we want to involve artists. We want some aesthetic concerns addressed, we want a designated bike corridor and a plan to get parking off the street.
- From a discussion on where we could have a parking area: one area that suggests itself is St. Charles Church.

Future Vision:

Our vision for 10 years from now: to have a safe, aesthetic, pleasing streetscape where existing businesses and houses are thoughtfully integrated with new business and where the area is currently dormant or derelict it be revitalized; where there's a diversity of small businesses, no big box stores, nice plantings and green space and where it's friendly to cyclists, walkers and the elderly.

Apropos of the group's comments, Catherine Lindquist noted some updates: that the Quartier Vanier BIA has now expanded to include both sides of Beechwood and will soon be unveiling a new 'brand' look and feel for the Beechwood area -so look forward to that; and there's yet another construction project coming our way of the St. Patrick Street/Bridge which should provide some opportunities to incorporate improvements and public art and we'll be looking as a community how we can leverage that.

Beechwood Corridor – Table 2:

Note Taker: Gail McEachern

Reporter: Isobel Bisby

- We started addressing **traffic as the main issue** for Beechwood - a bottleneck
- One solution may be to change the turn left sign coming over St. Patrick bridge, allowing us to turn left on Crichton, because there'll be a huge problem once the construction starts on the Minto site
- There is concern about traffic especially over the rush hour, parking when there's four lanes of rushing traffic, at least when parked cars are parked there it can slow it down
- We want small businesses, a mix of services - we need a greasy spoon, a wine bar, liquor store (heard Metro might get one)
- Another solution is expanding business on to Barrette - some space such as the Minto site may be too expensive commercial space on Barrette Street may be more affordable
- Comments on the great work and leadership of the BVA and the work with Vanier BIA
- Now we need to make sure we work with them and take advantage of those opportunities
- Maybe we could have a welcome package for new people through their real estate agents -a Welcome Wagon approach for Beechwood
- **Derelict lots and how ugly they are.** We know there was some action on this last year with Peter [Clark] but there doesn't seem to be any traction...
- Let's think about having days when we close Beechwood to traffic. The BVA Summer Solstice Stroll has been talking about that, to make it a pedestrian zone for one day, if that's possible.

Solutions: Having a Farmers market which will be happening at the Desjardins lot this summer - which is fantastic.

Future Vision:

In ten years, we want Beechwood local, walkable, accessible. We don't want Westboro - we could consider something like Hintonburg with small businesses. We want coffee shops, butcher, and of course a hardware store.

We want a village feel. Wider sidewalks and good street parking.

We need a village centre. In Spain, every town, village has a square where people gather. Suggestion that somewhere such as Desjardins, Metro, St. Charles Church, we have trees and flowers - **where people can gather.**



Forum Participants Hearing Discussion Table Reports

Friends of the Park

Catherine noted **Marci Surkes of Friends of the Park** was present and would be happy to talk about their work. Marci thanked Catherine and introduced Friends of the Park as a volunteer organization and noted they're always happy to have additional volunteers who love and care about the park if anyone would like to approach her after the meeting. "We take it upon ourselves to be the eyes and ears of the community in the park," she said and noted: "Some of the issues you've raised, we deal with on a regular basis. Whether it's the off leash area and concerns about it. One of the main things we've deal with and I'm sure you've all noticed it, is trash," she said, "Something that's taken a big part of my life the last few years - unfortunately." Too much garbage and insufficient cans, so it gets overwhelming and disgusting and people don't pick it up or know where to put it - it's a vicious cycle.

Still, we're trying to deal with that: we actually have very regular conversations with the City on that front (several times a week usually). Lack of lighting and other big issues we think and make pitches about a lot -so far not to great results. Making sure the playground is a smoke-free spot and there's lots of signage on that is something we've accomplished - so that sort of thing is what we do.

She noted their big annual event, in two weekends on Saturday morning they'll cleaning the park and the more the merrier. "We will be there with coffee from Bridgehead and treats from Epicuria (and acknowledge those great sponsors). I'll see you there, we'll have plenty of garbage bags, bring your gardening gloves and we'll have a really good time, I swear," she said. Catherine then thanked Marci for all her hard work.

Discussion Tables Summary

Facilitator: Catherine Lindquist

Catherine briefly summed up what we heard from the participants at the tables.

There's a lot we love about our community, particularly it's village feel but there's a lot we think that can be worked on to make it even better. We're hearing about beautification whether it be on Beechwood, better enforcement of planning rules throughout the community -commercial or residential. Work to enhance and bring the heritage conservation district up to a higher standard, and how we might all work together better in terms of community involvement and engagement.

Apropos of community engagement, Catherine encouraged participants to visit the three organization tables following the Forum - to get involved, become a member or a volunteer, or to obtain more information.



Forum Facilitator Catherine Lindquist

Next Steps:

Catherine then proceeded to address next steps:

- we will prepare an 'As We Heard It' Report for the Forum
- it will be posted on the NECA and NECTAR websites
- a note regarding that will be sent to the emails participants provided, to community list serves and so on

On that note, she asked for a show of hands to indicate how participants first heard about the Forum: the ad in New Edinburgh News? Receiving a New Edinburgh list serv or Mom's list serv email? NECA member emails? Posters? NECA website? New Facebook site? Twitter feed?

Most interestingly, hands were raised for *all* the channels.

Participants who hadn't already done so were asked by Catherine to please sign in, with their email.

Anita Szlazak then asked to address the Forum, stating the following:

- All the ideas on the boards are good ideas but where are your priorities and where is your plan?
- Who ought to be doing that? She assumes it's NECA.
- It's good to have separate organizations and she wouldn't be in favour of an umbrella organization adding another layer or more work, but she does think you need a plan -otherwise you miss the boat. The plan is a movable sort of thing -it doesn't just stay there.
- It's NECA'S job, she thinks, to decide what the objectives and priorities are, to get agreement with the other organizations, then work with that -it's a work in progress. That seems to be missing from the session today.

Catherine thanked Anita and noted it was a lot to ask groups to come up with short and long term priorities, but that some did.

And, concluding with Next Steps, besides the 'As We Heard It' report, we will be going to each of our host organizations and they will see what items they can action. Some will fall more obviously under 3 Cs or NECTAR or NECA. So we'll deal with that as each of our Boards or groups deals with the input we received today.

And, she noted there seems to be an appetite in the community for more gatherings like this and might be something for the next Councillor to think about. As shown by the high attendance at the BVA kick off and Minto consultation meetings, there seems to be an appetite for this and the more we get together, the more we get done.

Announcements:

The forum ended with some community announcements of upcoming events including:

- The BVA's event on June 21st, the Summer Solstice Stroll, along Beechwood Avenue.
- A Jane's Walk which will be led by Tobi Nussbaum next Sunday May 4th.

Catherine then thanked all for coming.

End of Forum

Addendum: A comment was received from a resident, subsequent to the Forum, to recommend that hydro lines be buried in future in New Edinburgh for reasons of heritage, environment, equality with other parts of the city (where hydro lines are buried), and security of Rideau Hall.

Attachments / Supporting Documents:

- 1. Pre Forum Consultation Survey**
- 2. Participant Sign In Sheets (On File)**
- 3. Map Panels (On File)**
- 4. View Point Panels Notes (On File)**
- 5. Discussion Table Notes (On File)**
 - Traffic & Parking
 - Heritage & Development
 - Community Engagement
 - Green Space & Waterways
 - Beechwood Corridor Tables 1 and 2

Attachment 1. Pre-Forum Consultation Survey

Guiding Questions for Conversations with Some Community Members re Proposed Forum on the Future of New Edinburgh

January 20 2014

At the NECA AGM last October, members were asked if they would be interested in taking part in a forum to discuss the future of this community. There was a very positive response to this idea.

Three community associations, NECA – the New Edinburgh Community Alliance, the Crichton Community Council and NECTAR – the New Edinburgh Community and Arts Centre are working together to carry out an informal sounding of a few community members. Our objective is to design a forum that would best respond to the interests and priorities of residents. You could help us by giving us your views on a few matters:

- Do you have any thoughts about the purpose of such a forum and what we should hope to achieve through it?
- Are there issues that you would like us to be sure to address?
- What would be your top two or three ideas about how this community might evolve, or what could be done to improve it?
- Are there things you'd like to change or eliminate that would make it a better place to live?
- We are thinking of having this forum on April 27, a Sunday afternoon, from 2 PM to 5 PM.
 - Would you plan to attend personally?
 - Would you encourage other people to attend?